

# VOICES OF LEGAL AID

ANNUAL REPORT 2014



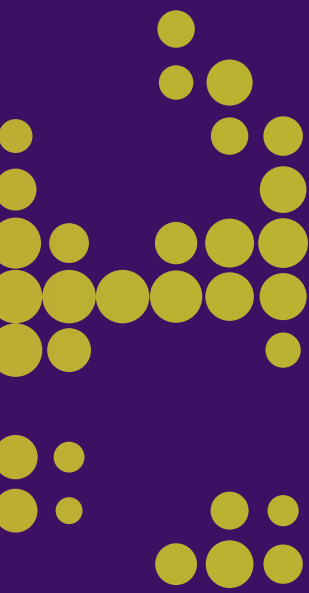
COMMUNITY LEGAL AID

INTRODUCTION	01
VOICES OF BERKSHIRE COUNTY	06
VOICES OF FRANKLIN COUNTY	08
VOICES OF HAMPDEN COUNTY	10
VOICES OF HAMPSHIRE COUNTY	12
VOICES OF WORCESTER COUNTY	14
CELEBRATION EVENT	16
EDUCATION LAW PROJECT	18
LAW SCHOOL PARTNERSHIP	20
VOLUNTEER LAWYERS SERVICE	22
CONCLUSION	24
DONORS AND FUNDERS	26
FINANCIALS	31
BOARD AND STAFF	32

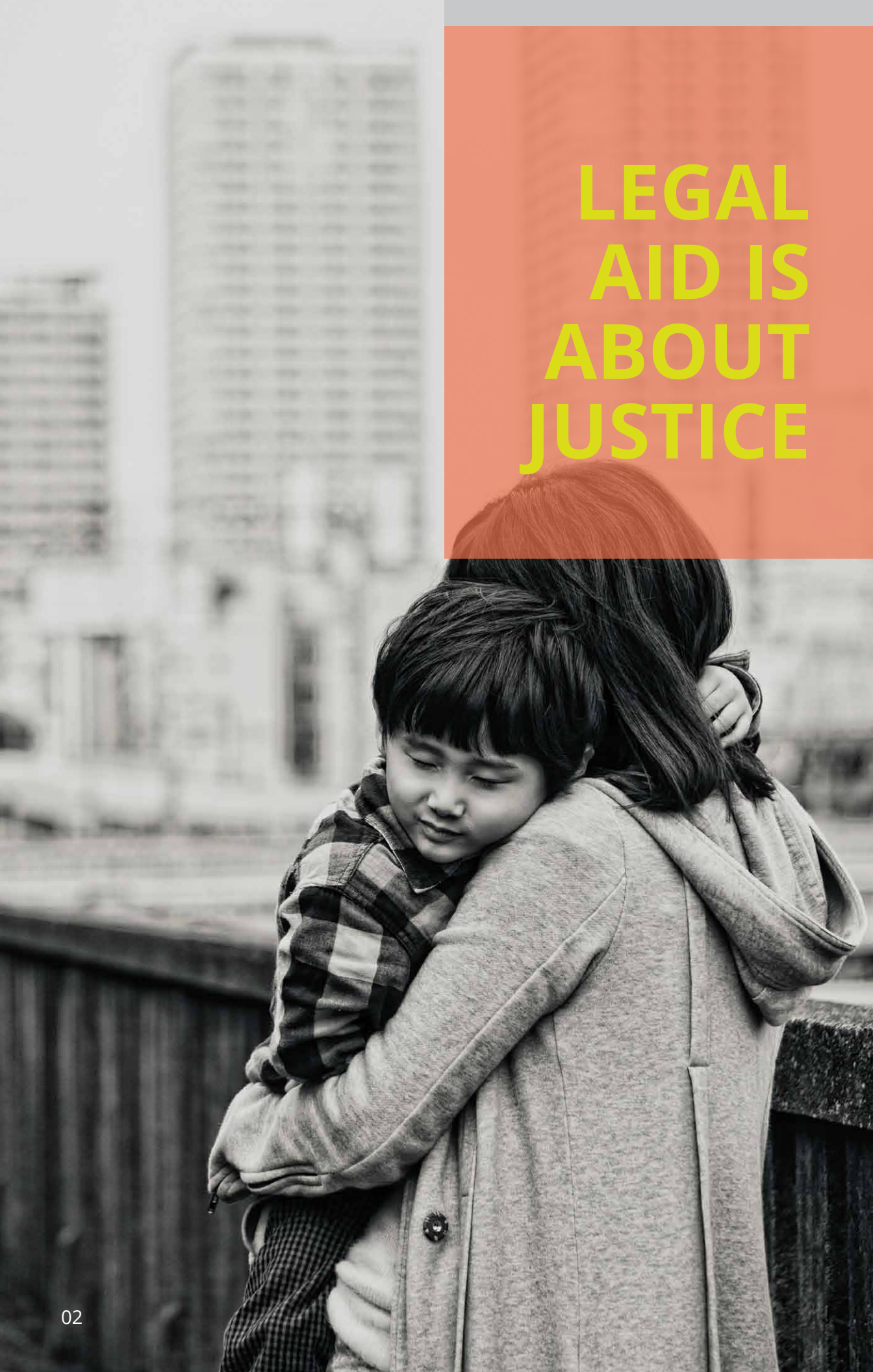


2014 marked the coming together of legal aid programs in central and western Massachusetts under the banner of Community Legal Aid.

**This is our story –  
but it is really the  
story of everyone,  
yourself included,  
who makes our  
work possible.**



Community Legal Aid, Inc. (CLA) provides free civil legal services to low-income and elderly residents of central and western Massachusetts. We assure fairness for all in the justice system, protecting homes, livelihoods, health, and families.



**LEGAL  
AID IS  
ABOUT  
JUSTICE**

# Justice for all, not just for those who can afford it.

Without a legal advocate, our clients would face the legal system empty-handed and alone when they are threatened by homelessness, violence and abuse, denial of lawful benefits, and other crises that need an urgent legal solution.

It's not just that the playing field isn't level. It's hard to play in a game where you don't know the rules and your opponent has all the gear.



Community  
Legal Aid

Fairness and justice... for all

# Thanks to your support, we are closer to achieving equal access to justice for all.

We invite you to turn the pages and hear the many voices of legal aid in our communities – from Berkshire County, across the Pioneer Valley, to Worcester County – and hope that these voices reinforce the importance of your support and commitment to justice... for all.  
Thank you.



Jonathan Mannina, Esq.  
*Executive Director*



Charlie Casartello, Esq.  
*Board President*

# SARAH'S STORY

CLA client

Sarah is a teacher's aide in the North Adams public school system. Because she is paid by the hour, she has no income over the summer, and has to rely on food stamps and a small adoption stipend for one of her children. This past summer, she tried to apply for TAFDC (government financial support for families with dependent children), but the state agency wouldn't even take her application, arguing that as a school employee, her annualized income would put her over the eligibility limit. Sarah was particularly concerned as she was behind on her mortgage payments, and the bank was threatening foreclosure. Michael, her CLA advocate, advised her to reapply, and when she was denied again, appealed on her behalf. At the appeal hearing, Michael argued that Sarah's income had been calculated incorrectly. Sarah won her appeal, and with the retroactive benefits, she paid her outstanding mortgage payments and got to stay in her home and feed her family.

## Louisa Weeden

Planning and Development Specialist,  
Elder Services of Berkshire County

"For many seniors, CLA provides a 'court of last resort' for those on limited incomes whose benefits or housing is at risk. If someone is poor, and their livelihood is at risk – income, housing, health care – legal aid is often the only protection out there for Berkshire seniors."

## Tom Hamel, Esq.

Martin Oliveira & Hamel, PC

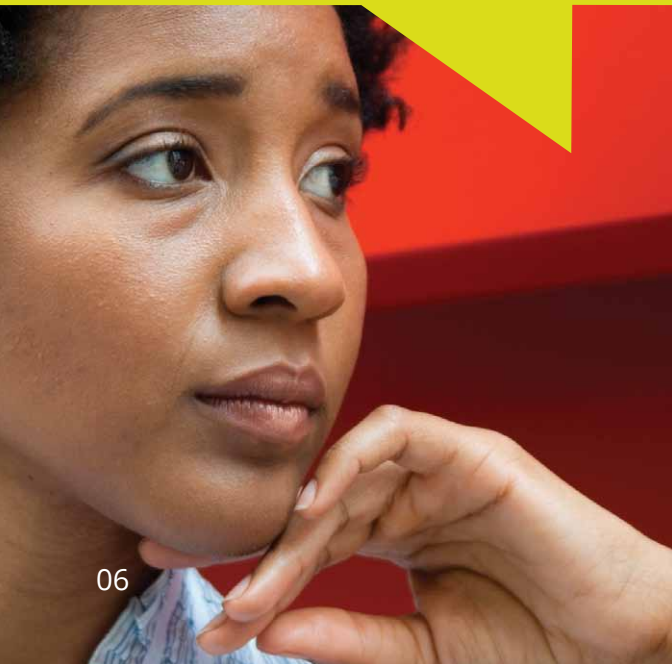
"Community Legal Aid is a vital resource for ensuring equal access to justice for all individuals, particularly for those who do not have sufficient financial means to hire private counsel. Legal aid helps the most needy in our society get assistance from qualified, competent, and experienced legal professionals."



## Michael McCarthy, Esq.

George Massimiano & McCarthy, PC

"I frequently refer eligible clients to CLA, as I know that the attorneys are competent and caring. While the practice of law is rewarding, it is becoming less remunerative. Lawyers in private practice perform many pro bono tasks and other community service. But we cannot afford to do too much work without compensation, or we would have to close our doors. CLA is a vital part of the legal community, because it helps so many people in need who cannot pay for a private attorney, and provides justice to the disadvantaged."







## Glynis MacVeety, Esq.

DeGregorio & MacVeety, LLP

“CLA is essential for families who find themselves in probate and family court, because there are no services for pro se clients other than lawyer for the day. While this is an excellent program, it cannot address the complex legal issues that present themselves in the domestic arena – custody, visitation and the like. CLA is an indispensable protection for children in situations where one parent is economically disadvantaged – where it can make all the difference for a parent who wants to keep a child but does not have the means to hire a lawyer.”

## Peggy Williams

Program Advisor, Trio Office,  
Berkshire Community College

“The students I work with are generally at risk – financially, academically – and have very diverse backgrounds. Many are single parents, trying to hold down multiple jobs and study. So when legal issues come up, the students know to come to my office, we triage, and then we refer the students directly to CLA. Our students are simply amazed at how quick and effective CLA can be, as they are just not used to immediate feedback when they are in a position of need, and they feel so supported by this wonderful service. We only wish we could find funding to expand our partnership to allow CLA to come to campus on a regular basis – I know that so many of our students, if they knew the service was here, would benefit as their needs, often critical needs around homelessness and income, are so urgent and pressing.”



## Berkshire County, MA

### MAIN OFFICE

152 North Street  
Pittsfield, MA 01201

### SATELLITE OFFICE

61 Main Street  
North Adams, MA 01247

# CARRIE'S STORY

CLA client, survivor of domestic violence

**"I feel so strong and powerful right now."**

This is what Carrie, a client, said to her CLA attorney on winning her housing case and knowing she would finally have a safe place to live. Thanks to support from United Way of Franklin County, CLA is able to provide a wide range of legal services to survivors of domestic violence. Carrie – a young woman with cognitive disabilities who had recently escaped her violent and abusive partner – needed help to get her landlord to provide heat and repair the bad conditions in her home.



**Judge Herbert H. Hodos (Ret.)**

**CLA Board Member**

"As a judge I had the ability and constitutional obligation to appoint attorneys at state expense to represent indigent criminal defendants, but not so for civil matters. After retiring from the judiciary I was pleased to join the board at CLA which now gives me the opportunity of helping to provide legal services in civil matters, at no cost, to low-income, elderly and disabled citizens in need."



**Nancy Richie**

**Vice President for Programs, Community Foundation of Western Massachusetts**

"We are delighted to help fund the innovative collaboration between CLA and Greenfield Community College that assists students in a very pragmatic way. It enables students to solve their personal or economic problems so that they can devote more time to concentrating on their education and moving forward with their lives."



**COMMUNITY FOUNDATION**  
OF WESTERN MASSACHUSETTS



**Bob Pura**  
**President, Greenfield  
Community College**

"I'm thrilled with our collaboration with

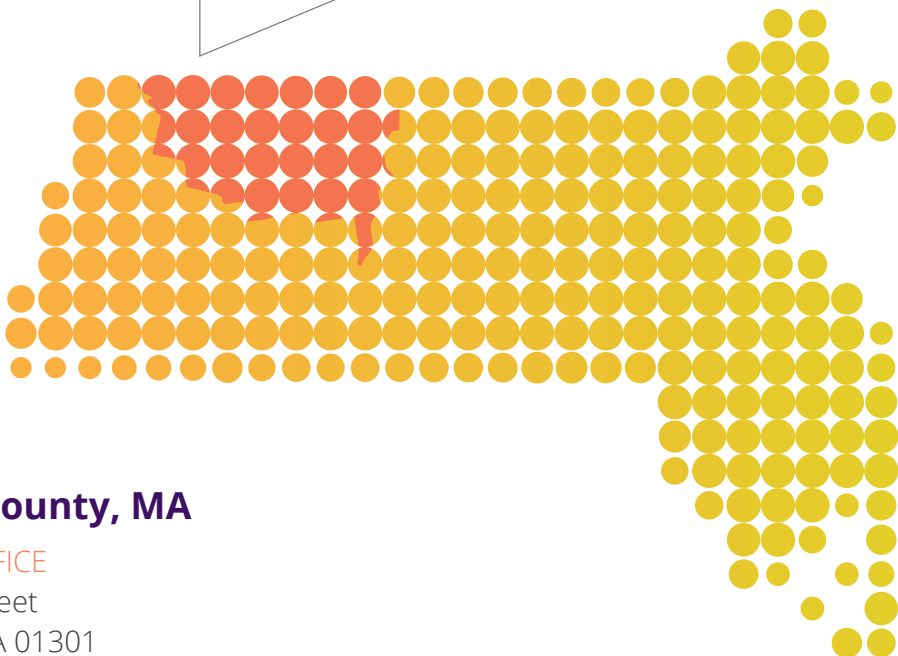
CLA – it's a perfect fit of students' needs and legal aid's mission. Far too many of our students find themselves with problems only legal support can fix, and unfortunately they don't have the resources to hire a lawyer and get good advice and counsel. The free services provided by CLA are a vital component of the educational experience here at GCC."



**Rosemarie Freeland**

**Women's Resource Center Coordinator,  
Greenfield Community College**

"As a former client of legal aid, I totally understand the importance of legal services for our students. Getting these services here on campus can make all the difference when students are trying to maximize their incomes, stay in stable housing, and complete their education to move on and up in life."



**Franklin County, MA**

SATELLITE OFFICE  
55 Federal Street  
Greenfield, MA 01301

## Charlie Casartello, Esq.

CLA Board President  
Partner, Pellegrini Seeley Ryan &  
Blakesley, PC

“Unlike defendants in criminal cases, low-income people with civil legal problems — domestic violence, evictions and foreclosures, lack of affordable healthcare, or the inability to access lawful benefits — aren’t eligible for court-appointed attorneys. Instead, they rely on the limited availability of legal aid programs, often the only way that basic needs such as financial security, affordable housing, and safety from abuse can be met. I’m very proud of the support our community provides to legal aid, and the work we do together to advance the cause of justice in Hampden County.”



Photo: Ryan Rodrick Beiler / Shutterstock.com



## Kevin Maltby, Esq.

Bacon Wilson, PC

“This year marks the 150th anniversary of the Hampden County Bar Association. The bar has always been committed to the community at large, and we could think of no better way to commemorate this anniversary than by recruiting 150 members to engage in pro bono work. Partnering with CLA really helped make this drive a success.”



## Nancy Ramos, Esq.

Law Offices of Nancy Ramos

“I started my career with legal aid, and am now in private practice in Springfield. CLA does amazing work, and serves people in our community that would otherwise go without legal help. It’s unique and essential!”



## Daniel Patrick Morrissey, Esq.

Bacon Wilson, PC

"As an attorney in private practice, I really value the contributions and experience CLA attorneys bring to the bar, especially in my primary practice areas. I regularly discuss current immigration issues with CLA staff and appreciate the value and skills they bring both to their clients and to our profession."



## Donna Agure

CLA Board Member

"CLA helps low-income folks have a chance of getting justice. Alone, they have no voice. With CLA, they can speak. As a previous client of CLA, I know exactly what it feels like to have the bottom fall out of my life. CLA helped me get back on my feet. And now, as a CLA board member, I really like being able to give back so that others can benefit from the same services."



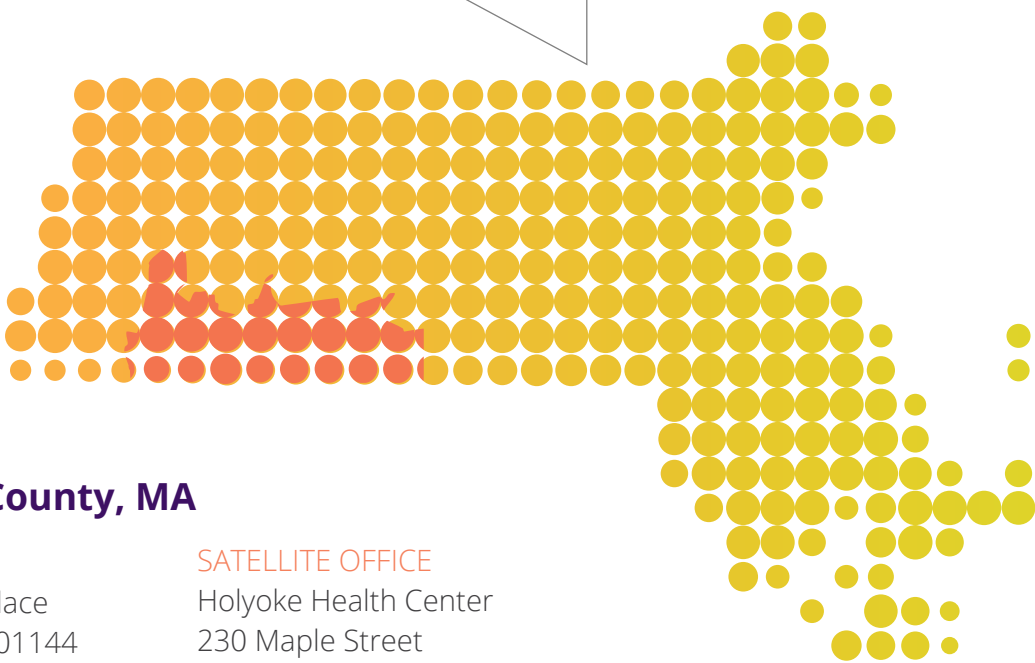
## Hampden County, MA

### MAIN OFFICE

One Monarch Place  
Springfield, MA 01144

### SATELLITE OFFICE

Holyoke Health Center  
230 Maple Street  
Holyoke, MA 01040



## Meredith H. Morrison

Legal Program Director, Safe Passage, Inc.

“Community Legal Aid provides representation in Probate & Family Court for some of our lowest-income clients who have survived physical and/or sexual abuse by their intimate partner. Having an experienced attorney leads to better outcomes in court -- such as higher child support orders and more protective custody and visitation plans for children of the relationship -- which may make all the difference in enabling a survivor to successfully leave an abusive partner for good.”



## Bill Newman, Esq.

Lesser Newman &  
Nasser, PC

“I have supported legal services in western Mass. for more years than I care to remember – including as a board member of Western Mass. Legal Services and Mass. Legal Assistance Corporation, and this year as a volunteer fundraiser with my friend and colleague Judge Gail Perlman (Ret.). We were thrilled that contributions from the Hampshire Bar more than doubled. We were moved by the generosity of local lawyers, attesting to the crucially important and highly-regarded work of Community Legal Aid.”



## Jonathan Kane, Esq.

Fierst, Kane &  
Bloomberg LLP

“CLA plays a vital role in the Hampshire County community because there are so few places here for people of limited means to access legal assistance. Although I am frequently opposing counsel, I appreciate when CLA lawyers get involved in a case because they educate their clients about their rights and often connect them to services and resources that ultimately benefit all parties.”





## Mary Ellen Niles Howard, Esq.

“Fundraising for CLA gives me a chance to reconnect with my colleagues – catching up on their lives and family. And no matter what their response, I enjoy sharing the goals and mission of legal aid, as it has such a great reputation and people respect that. It’s part of the fabric of the legal community.”



## Jim Ayers Executive Director, United Way of Hampshire County

“We see clear value in having Community Legal Aid as a partner to help us meet our agency objectives. Our funding is directed towards promoting economic security, and legal aid does a wonderful job ensuring that community members have access to the lawful benefits and resources they need and deserve.”



United Way of Hampshire County



## Hampshire County, MA

### MAIN OFFICE

20 Hampton Avenue  
Northampton, MA 01060

## Karen Riley McNary

Battered Women's Resources,  
Leominster

"CLA is the only resource for free legal services in North Central Mass. – which are essential for the safety and well-being of our clients. The barriers our clients face nearly all boil down to legal matters that require representation, such as custody and visitation issues, restraining orders, eviction from housing because of violence in the home, and immigration issues when the victim's status is dependent on that of the abuser. CLA is really there for these women and children in crisis."



## Samantha McDonald, Esq.

Fletcher Tilton PC

"I love volunteering with CLA for pro bono work.

There is nothing in my daily job as fulfilling as the smile on a client's face when she realizes that there is someone in her corner, that I'm not trying to get anything for myself directly from her, and the only reason I'm there is to help her."



## Natasha Torres

CLA Board Secretary

"A few years ago my family faced foreclosure - but thanks to CLA we

were able to modify the loan and stay in our home. Serving on the board and supporting CLA financially is a way of me giving back to this wonderful organization."



## Jean McMurray

Worcester County Food Bank

"Our partnership with CLA makes total sense,

as both organizations try to help people of limited resources here in Worcester County in time of need. CLA has created a benefits 'tool-kit' and has helped train our staff and volunteers so that they can identify people with legal issues and refer them to CLA for services."





## Fran Ford, Esq. and Shirley Doyle, Esq.

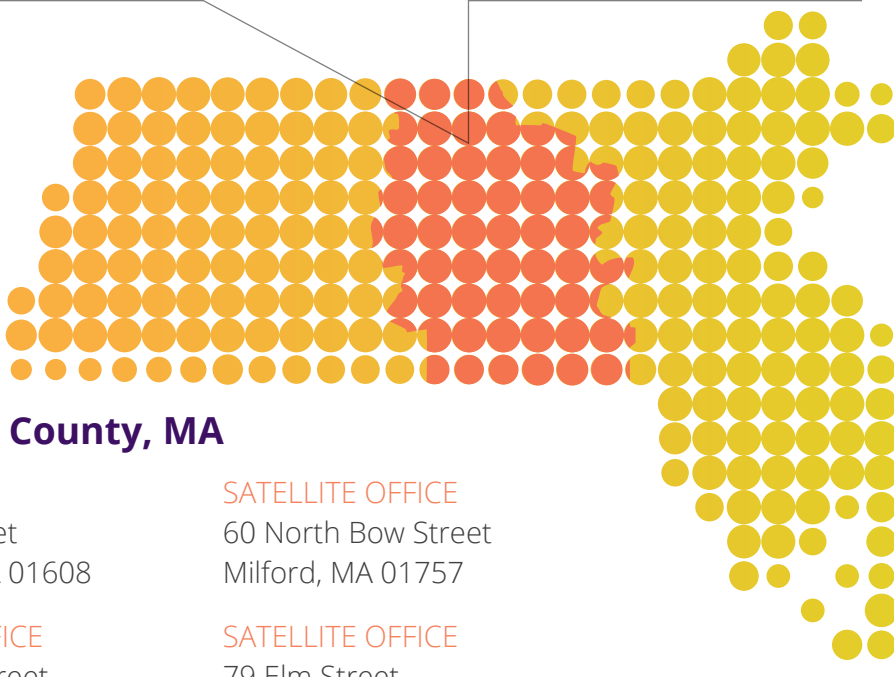
“CLA is among our top charitable causes. It just makes sense to us. We both believe that we should give back to the community that has given so much to us and CLA is a natural fit for folks in our line of work. Providing high-quality legal services to people in real need is important.”



## Mónica Lowell

**Vice President Community Relations,  
UMass Memorial Health Care**

“UMass Memorial is working on a community-wide pediatric asthma prevention program – involving public schools, health centers, Head Start, UMass Memorial Medical Center, and the Division of Public Health of the City of Worcester. We aim to create a new preventive model of care working with multiple partners to address the high rate of asthma here in Worcester. CLA is a key player, not only providing legal interventions to address health and safety issues in patients’ homes, but also technical assistance to help us coordinate a multi-pronged intervention on many levels.”



## Worcester County, MA

### MAIN OFFICE

405 Main Street  
Worcester, MA 01608

### SATELLITE OFFICE

60 North Bow Street  
Milford, MA 01757

### SATELLITE OFFICE

76 Summer Street  
Fitchburg, MA 01420

### SATELLITE OFFICE

79 Elm Street  
Southbridge, MA 01550

## To celebrate the coming together of legal aid programs in central and western Massachusetts, we said a big “Thank You” at Tuckerman Hall in Worcester on October 29, 2014.

We wanted to recognize the contributions of all our volunteers, donors, staff, advocates, and community partners in the fight for justice for all.

Special guests included U.S. Congressman Jim McGovern, with video remarks by U.S. Senator Elizabeth Warren. Both lawmakers spoke of the vital importance of legal services for all people, regardless of how much money they have.

Michael Angelini, Chairman of Bowditch & Dewey and board member of CLA, presented awards to Attorney Gayle Flanders Weiss and to State Senator Stephen Brewer in recognition of their commitment to justice. Judges Patrick Fox (Ret.) and Melvin Hoffman honored the contributions of volunteer attorneys Craig Ornell and Samantha McDonald.

A big thank you again to all those who make our work possible.





**"Your efforts are powerfully important for our families, and for our communities. Thank you for everything you do, and keep up the great work."**

*U.S. Senator Elizabeth Warren*



# Education Law

Education matters. Kids need quality education every day to learn, grow and become successful and productive adults. But not all kids get quality education, and many get pushed out of school for minor disciplinary matters. This is the start of the classic “school-to-prison” pipeline. Kids denied educational opportunities miss out on essential skills and learning, and end up under-educated, under-employed and sometimes in real trouble.

Here at CLA we knew this was a problem, and needed to figure out how to start fixing it. Thanks to funding from the Kirby Foundation, in 2014 we kick-started our Education Law Project designed to help kids stay in school with appropriate supports and services.

We target kids like five-year old Joey, who was suspended for pretending his finger was a gun while playing cops and robbers; and Lucas, a student with disabilities who was charged with assault and battery for losing his cool with the principal; and Olivia, who got into a fight with

another girl, was suspended, and ended up in juvenile court because the school encouraged the other student to seek a harassment order. Even the judge asked why the school was not trying to solve this kind of problem in-house.

For all these kids, legal aid can provide an essential and unique support to keep them where they need to be – in school, not at home, not on the streets.

Over the next few years, we are actively fundraising to establish a full-service practice across central and western Mass. Our goal is to work with schools to help them move to a holistic support model, based on prevention, timely intervention and support. It’s the law – Massachusetts passed Chapter 222 in July 2014 to reduce out-of-school suspensions so that children receive appropriate discipline and keep on learning. It’s evidence-based and common sense – kids who stay in school stay out of trouble. It’s the right thing – these kids and families don’t have the means to hire attorneys and defend their right to an education.





## **Lisa Kirby Gibbs and Peter Gibbs, donors**

“Lisa and I believe that all children have a right to access education. Although the public school system makes great efforts to provide a good learning environment, it does not always have the means to help the most vulnerable children —particularly when it comes to issues of dispute resolution and advocacy.

Providing the funding to launch The Education Project with Community Legal

Aid was an easy decision for us. The CLA attorneys are smart, incredibly committed and acutely aware of the issues school-aged children face today. Lisa and I both have backgrounds in Systems Theory, and we recognize the importance of examining process and thinking strategically. The CLA team consistently goes beyond individual representation advocating for constructive structural solutions in partnership with all players. We believe this is the way to achieve sustainable change.”

# Law School

Community Legal Aid partners with Western New England University School of Law to help train the next generation of lawyers in essential skills for their careers, representing actual clients in real cases. Students participating in the Legal Services Clinic first complete a lawyering skills seminar taught by a CLA attorney. The following semester, students are placed in one of CLA's offices where they work on cases under the supervision of a CLA attorney.

## Student Spotlight

This past fall, Katie decided to spend a year serving as an AmeriCorps member working on preventing eviction and foreclosure cases. Katie successfully represented several homeowners and tenants who were at risk of losing their housing. She won her first trial, defending a tenant facing eviction who was living

in substandard conditions. Katie was awarded a Massachusetts Bar Foundation Fellowship in 2013 which allowed her to continue to work with CLA over the summer. This past fall, Katie decided to spend a year serving as an AmeriCorps attorney working on preventing homelessness for residents in public and subsidized housing.

"It feels really good working for social justice, and my work here as an attorney allows me to hold institutions or individuals accountable when they don't follow the rules, or they choose to disregard the rights of disadvantaged or disempowered people. I love representing my clients in court and arguing in their defense. I like litigation – and legal aid provides a wonderful and rich environment for me to learn skills, to become a better advocate, and to pursue my career goals."

*Katie Ady Bell, Western New England University School of Law, Class of 2014*





## **Eric Gouvin, Dean and Professor of Law, Western New England University School of Law**

“This is a great partnership that benefits everybody: our students, the law school, and Community Legal Aid and their clients. Our students learn valuable skills at the elbow of master attorneys, while gaining insight into the important work lawyers can do to help people who would otherwise go unrepresented. It provides an invaluable opportunity for our students to get out into the real world, meet real people with real problems, and develop the skills and the empathy necessary to become both better lawyers and better citizens.”



# Volunteer Lawyers Service

In the face of great demand for legal assistance, and in light of the budgetary pressures on legal aid, one of the critical means of increasing the supply of legal services is through assistance from pro bono attorneys. For over 30 years, the Volunteer Lawyers Service (VLS) has served as the primary clearinghouse for pro bono legal work in central and western Massachusetts. Over these years, lawyers volunteering through VLS have helped thousands of the neediest people within our communities gain access to the justice system.

As part of the recent consolidation of legal aid programs in central and western Massachusetts, Community Legal Aid now administers VLS. In the coming year, CLA will be looking to build upon the partnership VLS has forged with the private bar to continue closing the justice gap.

## Why Private Lawyers Volunteer

### THE NEED IS GREAT.

CLA turns away more than 50% of eligible clients in need because it doesn't have enough resources. Volunteers play an essential part in narrowing the justice gap.

### IT FEELS GOOD.

"Working in private practice, I need to keep my eye both on the law and on the bottom line. What I love about pro bono work is that no money changes hands – but I feel like a million bucks! Having legal counsel makes a huge difference, especially to legal aid clients." (Mary Ellen Niles Howard, volunteer lawyer, Hampshire County)

### IT'S FUN!

"There is a camaraderie between the volunteering lawyers that just makes it fun. I sometimes get to practice my really awful Spanish and that never fails to elicit giggles from my clients." (Samantha McDonald, volunteer lawyer, Worcester County)

**406** NUMBER OF NEW CASES REFERRED THROUGH THE VLS IN FY 2014



**173** NUMBER OF PRIVATE ATTORNEYS WHO ACCEPTED A REFERRAL



**404** NUMBER OF PRO BONO CASES CLOSED IN FY 2014



**2705**

TOTAL PRO BONO HOURS DONATED (CLOSED CASES)



**\$489,214**

VALUE OF DONATED PRO BONO HOURS



## On behalf of our client communities, CLA would like to thank the following attorneys who accepted a pro bono referral from the Volunteer Lawyers Service in the past fiscal year.

Peter Adams  
Thomas J. Aitken, Jr.  
Alfred J. Albano, Jr.  
Lisa Alberto  
Gail Anne M. Allen  
Mitchell Allen  
Laura F. Arbeitman  
Jennifer A. Arneri  
Nancy Attobelli  
Kenneth R. Barba  
Michelle Begley  
Gregory Benoit  
Dominic Blue  
Chris Borzumato  
William Boyle  
James T. Brown  
Lawrence L. Bull  
Jeffrey A. Burstein  
Jennifer Butler  
David Craig Cafarelli  
Mary Camp  
Sergio Carvajal  
Burton Chandler  
Lance S. Chavin  
Susan H. Christ  
Cynthia J. Clark  
Lawrence E. Cohen  
Joseph B. Collins  
Daniel I. Cotton  
Mark D. Cress  
Colleen Currie  
Lisa d'Errico  
Ann Dargie  
Thomas Day  
Diane DeGiacomo  
Christine Devine  
Julie Ann Dialessi-Lafley  
Mark Pasquale DiFonte  
Justin H. Dion  
Thomas J. Donahue, Jr.  
John Drake  
Karen Duffy  
David Dupont  
Michael Edelstein  
Al Esposito  
Joel H. Feldman  
Karli-Marie S. Fernandez

Stephen Ferrarone  
Steven J. Foley  
Terry M. Ford  
Hon. Patrick Fox (Ret.)  
Michael A. Frazee  
Helena S. Friedman  
Suzanne Garrow  
Todd A. Gattoni  
Henry E. Geberth  
Robert A. George  
Melissa R. Gillis  
Claudette-Jean Girard  
Keith Glenney  
Lynnette Goodnow  
Andrea L. Gordon  
Michael Gove  
Lillian Gray  
John J. Green, Jr.  
Kevin Greenhalgh  
James F. Gregory  
Felicity Hardee  
Deirdre Healey  
Patricia Hebert  
Hugh D. Heisler  
Brigid M. Hennessey  
Holly H. Hines  
Edwin H. Howard  
Maegan Hurley  
Aaron H. Hutchins  
Marie T. Jablonski  
Scott Jelescheff  
Richard Johansen  
Mordechai Kamel  
Steven Katz  
Julia Wilkins Kay  
Kelly Koch  
Paul G. Kolesnikovas  
Robert W. Kovacs, Jr.  
Stephen N. Krevalin  
Gina M. Letellier  
Dawn M. MacKinnon  
Raquel Manzanaras  
Lauren M. Marcous  
Janice G. Marsh  
David J. Martel  
Samantha McDonald  
John McNally

Sean T. McNiff  
Wendy M. Mead  
Dorothy Meyer Storrow  
Jeffrey Miller  
Eileen Milton  
Carolyn M. Mitchell  
Jack P. Morrison  
Sheila Mulholland  
Kristofer Munroe  
Karen Murphy  
Brian W. Murphy  
Carrie Naatz  
Donna Diamond Nardi  
Carla Newton  
David M. Nickless  
Patrick D. Nicoletti  
Mary Ellen Niles Howard  
Andrea M. O'Connor  
James L. O'Connor, Jr.  
Pamela Oddy  
Kathleen O'Malley  
Gina O'Neil  
William Howe Oldach  
Walter Oney  
Craig Ornell  
Robert Osol  
Stephen Pagnotta  
Richard S. Paris  
George E. Pember  
Regina Perry-Abbott  
Christine Pikula  
Janet M. Raheb  
Nancy Ramos  
Ellen Randle  
Roger J. Reid  
Kara Rescia  
Caroline Robillard  
Rachel Rothman  
Matthew Rousseau  
David W. Sacco  
Mary Samberg  
Anthony J. Scibelli  
Carolyn E. Scott-Howe  
Priya Selvam  
Gary Shannon  
Karen Sharfenberg-  
Ferrarone

Denis M. Shear  
Richard Sheils  
Michael Shivick  
John F. Shoro  
Gerald E. Shugrue  
Richard D. Silver  
Francis X. Small  
Harland L. Smith  
Bernadette Stark  
David Sugarman  
Paul M. Sushchyk  
Robyn Davis Szewczyk  
Kiersten Taylor  
Kelsey Thomassen  
Jennifer A. Thorn  
Christina M. Turgeon  
Dean Valliere  
Dorothy Varon  
Judith Vassilowski  
Diana S. Velez-Harris  
Tom G. Vukmirovits  
Steven Weiner  
Jeffrey S. Weisser  
Phillip Wellman  
Renée Wetstein  
James A. Whitbeck  
James A. Wingfield  
Claudine Wyner  
James F. Yates  
Mark Zarrow

The following attorneys  
volunteered  
substantial time in  
Fiscal Year 2014 to  
CLA and its clients:

James W. Bucking  
Christopher S. Feudo  
Dean F. Hanley  
Michelle B. Limaj  
Sharon C. Lincoln  
Judith Rothbard Tate

# Conclusion

The need for legal services far outstrips our ability to provide them. CLA is forced to turn away over half of the people eligible for our services who ask us for help because we don't have enough resources. Each of these people is in a legal crisis when they call for help.

But every time limited funds choke off our ability to accept a case, we have to make agonizing decisions:

Which battered woman is in the MOST immediate danger without legal help?

Which family will become homeless FIRST without representation in Housing Court?

Your contributions – financial, volunteer, partnership – are essential to providing free legal assistance to those in dire need in the communities where we live and work. They transform lives by:

- Defending victims of abuse
- Preventing homelessness
- Ensuring health and safety
- Protecting jobs and economic security
- Fighting discrimination

On behalf of all of the Community Legal Aid family, THANK YOU for being one of our greatest friends and allies as we work together to provide fairness and justice for all the residents of central and western Massachusetts.

# 4,849

NUMBER OF CASES  
CLOSED



## AREA OF LAW

867 Maximizing incomes

301 Defending workers

340 Working towards citizenship

1966 Preventing homelessness

982 Keeping families safe

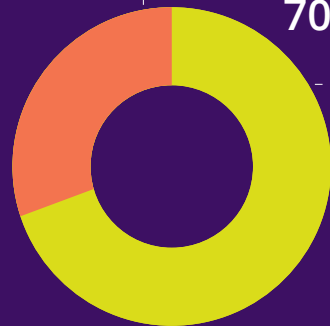
137 Protecting consumers

184 Access to affordable healthcare

72 Other

MEN 30%

WOMEN  
70%



## CASES CLOSED BY AGE

3% 0 - 17  
76% 18 - 59  
21% 60+

# Donors for Fiscal Year 2014

(Oct 1, 2013 through Sept 30, 2014)

## **\$20,000+** **CHAMPIONS OF JUSTICE**

Kirby Foundation  
Fund of the Greater  
Worcester Community  
Foundation

## **\$10,000+** **PILLARS OF JUSTICE**

Hermann Foundation,  
Inc.

## **\$5,000+** **KEYSTONES OF JUSTICE**

Anonymous  
Bowditch & Dewey  
Fund of the Greater  
Worcester Community  
Foundation  
Mirick O'Connell

## **\$2,500+** **FELLOWS OF JUSTICE**

Michael Angelini  
Bacon Wilson, PC  
Bulkley Richardson and  
Gelinas, LLP  
Hanover Insurance  
Group, Inc.  
Pellegrini Seeley Ryan &  
Blakesley

## **\$1,000+** **ADVOCATES OF JUSTICE**

Babson Capital  
Management  
Berkshire County Bar  
Association  
Charles Casartello  
and Carol Kantany-  
Casartello  
Doherty Wallace  
Pillsbury & Murphy, PC  
Paul Doherty  
Egan Flanagan and  
Cohen Foundation

The Feigenbaum  
Foundation, Inc.  
Fierst, Kane &  
Bloomberg LLP  
Paige Dunmire Firment  
Francis Ford and Shirley  
Doyle  
Joel Greene and Ann Lisi  
Greenfield Cooperative  
Bank  
Hugh Heisler  
Hon. James F. Queenan  
Legal Services Fund  
of the Greater  
Worcester Community  
Foundation

J. Kendall Huber  
Lesser, Newman &  
Nasser, LLP  
Lian Zarrow  
Jonathan Mannina  
Morrison Mahoney LLP  
Mountain Dearborn &  
Whiting LLP  
William Newman  
Vincent O'Rourke Jr.  
Sarah and Douglas  
Marshall  
Seder & Chandler, LLP  
Steve Taviner  
Sumner Tilton Jr.  
Richard Van Nostrand  
Webster Five  
Weinberg & Garber  
Gayle Flanders Weiss  
Zurn, Sharp & Heyman,  
LLP

## **\$500+** **PATRONS OF JUSTICE**

AbbVie Inc.  
Alekmán DiTusa LLC  
Michael Badger  
Berkshire Bank  
Foundation  
Bourgeois White  
Brodeur-McGan, PC  
Douglas Brown  
Gerald Carson

Cohen Kinne Valicenti &  
Cook LLP  
Belgica Cordero  
Tracy Craig  
Colleen Currie\*  
Christopher DeFrancis  
James Donnelly, Jr.  
Donovan & O'Connor,  
LLP  
Jane Eden  
Diane Esser  
Fitzgerald Attorneys At  
Law, PC  
Warner and Mary  
Fletcher  
Eric Gouvin  
Hon. John Greaney (Ret.)  
Greenfield Savings Bank  
Mary Ellen Niles Howard  
John Keenan  
Michele Kunitz  
Lazan Glover & Puciloski  
LLP  
Jill Lewis  
Martin Oliveira & Hamel,  
PC  
Edward McIntyre  
Richard Morocco  
Murphy & Vander Salm  
LLP  
Patricia Owen and  
Barbara Brown  
Joseph Pellegrini  
Hon. Gail Perlman (Ret.)  
Faye Rachlin  
Reall Lucentini &  
Lucentini  
Maria Rivera-Ortiz  
Todd and Shelley  
Rodman  
Sasson, Turnbull, Ryan  
& Hoose  
Michael Serduck  
Shatz Schwartz & Fentin,  
PC  
Sigel Family Foundation  
Thomas M. Libbos, P.C.  
Xanthakos and  
Malkovich

## **\$100+** **BELIEVERS IN JUSTICE**

Aaron Posnik & Co., Inc.  
Jonathan Abbott  
Michael Abodeely, Jr.  
Stephen Abraham  
Peter Adams  
Robert Adler  
Carl Aframe  
Robert Agnoli  
Alavi & Braza, P.C.  
Alfred Albano Jr.  
Mark Albano  
Allegro Microsystems  
Roy Anderson  
Stephen Anderson  
Gregory Angelini  
Anonymous (6)  
Christine Anthony  
Frank Antonucci  
Ara P. Heroian Trust  
Laura Arbeitman  
Arvanitis Phelan &  
Molta, P.C.  
Robert Astor  
Gina Barbieri  
Bardwell Bowlby &  
Karam Insurance  
Agency  
Benjamin Barnes  
Archer Battista  
Belforti & Dupont  
Ofer and Rhoda Ben-Gai  
Elizabeth Bramson and  
Peter Benjamin  
Ronald Berenson  
Ellen Berger  
Arthur Bergeron  
Berkshire Mediation  
Group  
Bernstein & Stern LLC  
Berthiaume &  
Berthiaume  
Henry Beth  
Brian Bickford and  
Sarah Loy  
Clayton and Betty  
Bickford  
Laurence Bird, III  
James Bisceglia  
Christine Biscotti-  
Quitadomo  
Alan Black  
Francis Bloom  
Mark Bloom  
Mark Bodanza  
Valerie Botter  
Miriam Krell Bourke  
Bovenzi & Donovan

Lucy Brennan  
 Michael Brockelman  
 Leslie Brown  
 Brian Buckley  
 John Budd  
 Marcia Bull  
 Jack Burke  
 Burrows, Weiss, Mintz  
 and Lippiello  
 John Busbin\*  
 Kevin Byrne  
 Jesse Caplan and Valerie  
 Kerxhalli  
 Corey Carvalho  
 Casartello & Murphy, PC  
 Ray Catuogno  
 Chacharone & Power,  
 PC  
 Scott Charney  
 Wen Yu Chen  
 Priscilla Fifield Chesky  
 David Chivers  
 Christopher Neary  
 Landscaping  
 Christopher R. Porter  
 Builders, Inc.  
 Elizabeth Clarke  
 Coakley Pierpan Dolan  
 & Collins  
 Yuki Cohen  
 Joseph Collins  
 Joel Colon  
 Committee To Elect Tom  
 Bowler Sheriff  
 Connor Morneau & Olin,  
 LLP  
 Michael Considine  
 Hon. Philip Contant  
 Cooley Shrair PC  
 Katherine Coolidge  
 Duke Corliss  
 James Cosgrove  
 Paul Cranston  
 John Creedon Jr.  
 Daniel Ward Cronin  
 Curran & Berger, LLP  
 John Curran, Jr.  
 Diane Curtis  
 Daniel & Fontaine, LLC  
 Jenny Daniell  
 Phillips Davis  
 Peter Dawson  
 Deely & Deely  
 DeGregorio & MacVeety,  
 LLP  
 Jamima Demma  
 Lisa d'Errico  
 Christine Devine and  
 Keith Palos  
 John DiBartolo Jr.

Francis Dibble, Jr.  
 Gerard DiSanti  
 Bruce Clarkin  
 Brenda Doherty  
 Hamilton Doherty, Jr.  
 Dolan and Dolan  
 Sarah Dolven  
 Donahue, Rauscher &  
 McGrail, P.C.  
 Paul D'Onfro  
 Victoria Donkor  
 John Donna  
 Kate Downes  
 Anthony Doyle  
 Henry Drapalski, Jr.  
 Donald Dubendorf  
 Paul Durkee  
 Joseph Dusel  
 Jay Dwyer  
 Laura Chrismer  
 Edmonds  
 Edward Etheredge  
 Hal Etkin  
 Peter Ettenberg  
 Facchini & Facchini, PC  
 Randy Feldman  
 Thomas Field, III  
 Jonathan Finkelstein  
 William Fisher and Jane  
 Hopkins-Fisher  
 Thomas Fitzpatrick  
 Wilson Flanders  
 Thomas Flannagan  
 William Flannery  
 Lee Flournoy  
 Paul Foley  
 Hon. Patrick Fox (Ret.)  
 Fraier & Maillet, PC  
 Gene Friedlander  
 Richard Gaberman  
 Gable Electric, Inc.  
 Patrick Gable  
 Arthur Gaudio  
 Henry and Catherine  
 Geberth  
 Gelinas & Lefebvre, PC  
 Gelinas & Ward, LLP  
 Gerard, Ghazey & Bates,  
 PC  
 Gobel & Hollister  
 Mark Goldstein  
 Andrea Lee Gordon  
 Andrew Gould  
 Hon. Mel Greenberg  
 (Ret.)  
 Elizabeth L.B. Greene  
 Arnold Greenhut  
 Melissa Greenspan  
 Greylock Federal Credit  
 Union

James Gribouski  
 Grinnell Partners, LLP  
 Thomas Growhoski  
 Haddad Dealerships Of  
 The Berkshires  
 Stuart Hammer  
 Felicity Hardee  
 Dale Harger  
 Hassett & Donnelly, P.C.  
 Barbara Hawley  
 Pamela Heacock  
 Deirdre Healy  
 Katharine Higgins-Shea  
 Hon. Timothy Hillman  
 Andrew Hochberg  
 Donald and Naomi  
 Hodgman  
 Hon. Herbert H. Hodos  
 (Ret.) and Janet Hodos  
 Michael Hooker  
 Bruce Hopper  
 Lawrence Hott  
 Patrick Hourihan  
 Leona Ittleman  
 Peter James  
 Leonard Jekanowski  
 Kenneth Kahn  
 Elizabeth Katz  
 Oran Kaufman  
 J. David Keaney  
 Mary Kennedy  
 Keyes & Donnellan, PC  
 Rich Kneeland  
 Julie Koshgarian  
 Judith Kundl  
 Paul Lalonde  
 Thomas Landry  
 Warren Lane Jr.  
 Nancy Laprade  
 Gerard Laurence  
 Nicole Reeves Lavallee  
 Barbara Petersen Law  
 Christine LeBel\*  
 Mark Twombly Lee  
 Lester Halpern &  
 Company P.C.  
 Jonathan Levin  
 Liberty Mutual Personal  
 Insurance Company  
 Kenneth Lieberman  
 Matt Lindberg and Tina  
 Paradiso  
 Roger Lipton  
 Robert Longden  
 Lynch Scrimo-Attorneys  
 Lyon & Fitzpatrick, LLP  
 Brian and Karen  
 MacCracken  
 MacNicol & Tombs LLP  
 Susan Mailman

Bill Malloy  
 Laura Mann  
 Patrick Manseau  
 Antonio and Teresa  
 Marcella  
 Peter Martin  
 Pamela Massad  
 Matthieu Massengill  
 Cathleen May  
 Mazzeo's Ristorante  
 Kelly McCarthy  
 McCormick, Murtagh &  
 Marcus  
 Hon. C. Brian McDonald  
 (Ret.)  
 Francis McDonald  
 John McDonough  
 Hon. James McElroy  
 (Ret.)  
 Susan McFarlin  
 John McInnes  
 McLean Realtors  
 Katherine McMahan  
 Jack McQuade and Jane  
 Miliotis  
 Jean Mahan  
 Thomas Merrigan  
 Bruce and Jane Miller  
 Randy Milou Jr.  
 Keith Minoff  
 Thomas Miranda  
 John Mirick  
 Frederick Misilo Jr.  
 Carolyn Metzger  
 Mitchell  
 Gail Molari  
 Linda Molta-Tetreault  
 Janet Wilson Moore  
 John Moriarty, Jr.  
 Beth Morse  
 Madeline Moser  
 Mary Mukimba  
 Timothy Murray  
 Christine Narcisse  
 Virginia New  
 Nicole D. Sullivan &  
 Associates  
 Andrea Nuciforo, Jr.  
 Theresa O'Bryant  
 O'Connell & O'Connell,  
 P.C.  
 O'Connor & Rivard  
 Attorneys At Law  
 Jeff and Andrea  
 O'Connor  
 AJ O'Donald, III  
 Eugene O'Donnell Jr.  
 Louis Oggiani  
 Daniel Olohan  
 Joseph Pacella

Jerold Paquette  
Parese, Sabin, Smith &  
Gold, LLP  
Miguel Perez  
Philbin & O'Neil, LLC  
Stephen Philbin  
Kenneth Pickering  
Nicholas Plante  
Constance Adams Platt  
Lewis and Sally Popper  
Leslie Powers  
Mark Powers  
Lucy Prashker  
Robert Proskin  
John Pucci  
Elizabeth Quigley  
Razia Rahman  
Nancy Ramos  
James Ramsey  
Henry Raphaelson  
Jodi Rathbun-Briggs  
William Reid  
Timothy Reilly  
Jendi Reiter  
Henry Rigali  
Caroline Robillard  
Thomas Robinson  
Allan Rodgers  
Stephan Rodolakis  
Lisa Rodriguez-Ross  
John Ross, III  
Daniel Rothschild  
Paul Rothschild  
Benjamin Rudolf  
Cynthia Russo  
Barry Ryan  
Mary Ryan  
Robert Sacco  
Jeffrey Sagalyn  
Robert Sakakeeny\*  
Anthony Salvidio II  
Santaniello &  
Santaniello, LLC  
Sbrogna & Brunelle, LLP  
Thomas Scannell  
Susan Scott  
Seewald, Jankowski &  
Spencer, PC  
Alan Nathanson Sharpe  
Gordon Shaw  
Janet Sheppard  
Siddall & Siddall PC  
Elizabeth Sillin  
F. S. Smithers  
Mary Socha  
Cynthia Spinola  
William St. James  
Starr Vander Linden, LLP  
Joan Steiger

Howard and Carolyn  
Stempler  
Shelley Steuer  
Robert and Maryann  
Sudmyer  
David E. Sullivan  
Sean Sullivan  
Paul Sushchik  
Szlachetka Dubay, PC  
Szumowski Law, PC  
David Talman  
James and Paul Tashjian  
Polly Tatum  
The Co-op  
George Thompson Jr.  
Katie Toomey  
Dave Francoeur  
Charles Vander Linden  
Alan Verson  
Anthony Vigliotti  
Vittorioso and Taylor  
Janie Lanza Vowles  
Ward, Walsh & Rice, P.C.  
Rickie Weiner  
Steven Weiner  
Renée Wetstein  
Wheeler & Taylor, Inc.  
John Wickstrom  
Wilhelm Shimel & King  
Xiaoli Yang  
Hector Zavala  
Hon. Elliott Zide (Ret.)  
Roger Zimmerman

### **UP TO \$99 FRIEND OF JUSTICE**

Jesse Adams  
Julia Allan  
Bonnie Allen  
Allyn & Ball PC  
Tahirah Amatul-Wadud  
Amazon Smile  
Foundation  
Nicholas  
Anastasopoulos  
Anonymous (10)  
Amanda Baer  
Merilyn Bambauer  
John Barry Jr.  
Gina Barry  
Peter Barry  
David Bartley  
Joseph Bartulis Jr.  
Adam Basch  
Hosea Baskin  
Guy Beacom  
Begley & Webster  
Jeffrey Bengtson  
Clarence Bennett

Gerald Berg  
Alice Bers  
Clayton and Betty  
Bickford  
Katherine Bierwas  
Kurt Binder  
Mark Bixby  
Susanne Blatt  
Cristobal Bonifaz  
John Bonifaz  
Boraski & McLaughlin  
Dora Bowers  
Merricka Breuer  
Peter Brewer  
Melissa Brown  
Richard Buckley  
Rosemarie Burton  
Erin Buzuvis  
Katherine Callaghan  
Elizabeth Campanale  
Jennifer Keith Cannon  
Nicole Caprioli  
Michael Carey  
Richard Carpenter, Jr.  
Kirk Carter  
Amy Caruso  
Raph Casey  
Kathleen Cavanaugh  
William Chambers  
Michael Chernick  
Robert Chesbro  
Karla Clarke  
Joseph Colonna  
Harry Conklin  
Theodore Cooledge  
Claudine Cotto  
James Crowley Jr.  
Culliton & Flowers  
Michael Cutler  
Scott Davis  
Kathleen Degnan  
Anthony Della Ripa  
Henry Dewey  
Jennifer Dieringer  
Kelli DiLisio  
Chuck DiMare  
Frank DiSanti  
Vicki Donahue  
Jeffrey Donaldson  
Patricia Donovan  
Robert Dore, Jr.  
Mr. and Mrs. James  
Dowling  
Karen Duffy  
David DuPont  
Jeffrey Duquette  
Leah Edwards  
Ashley Edwards  
Dennis Egan Jr.

Marissa Elkins  
Scott Ellis  
Al Esposito  
Denise Falardeau  
Allen Falke  
Anthony Fernandes Jr.  
Kenneth Ferris  
Gary Fialky  
Lucia Figueroa  
Matthew Fisher  
Jeffrey Fishman  
Daniel Flynn  
Robert Fontana  
Mark Foss  
Donald Frank  
Tony Gallant  
Paul Garbarini  
Edward Gauthier, IV  
Raymond Gendron  
Alfred Geoffrion, Jr.  
Michael Gilliatt  
Claudette-Jean Girard  
Gary Goldberg  
Dean Goldblatt  
Marie Grady  
Jenifer Gray-Lewis  
Nathaniel Green  
James Gregory  
Michelle Griffin  
Bruce Grinnell  
Stefan Grotz  
Vera Halilaj  
Carla Halpern  
Maureen Harrington  
Joseph Harty  
Jon Helpa  
Michelle Horrigan  
Peter Irvine  
John Jarek  
Harry Jekanowski, Jr.  
Emily Jones  
Timothy Jones  
Peter Jordan  
Maria Hanna Joseph  
Martin Kallio, Jr.  
Michael Kallock  
Jonathan Kane  
Steven Katz  
Glenn Keiderling, Jr.  
Robert Kilroy  
Mary Klaes  
Edward Kmon  
Kelly Koch  
Lindsay Koshgarian  
Robert Kovacs, Jr.  
Andrew Krall  
Charles Ksieniewicz  
Leah Kunkel

Labrie, Pouliot, Larocque  
and Guiel, PC  
Tara Lagu  
Heather LaPorte  
Arlene Lawsure  
Ellyn Lazar-Moore  
Thuha Le  
Eileen Brady Leahy  
C. Silvia Leb  
Richard Leblanc  
Kebby Lee  
Ellen Leuchs  
Lawrence Levine  
Melanie Lewis  
Gary Liquori  
Janet Lombardi  
Buffy Lord  
James Loughman  
Stephen Paul Maidman  
George Marion  
Robert Martin  
Vanessa Martinez  
Isaac Mass  
Dylan Mawdsley  
David McCay  
Jeffrey McCormick  
Hon. C. Brian McDonald  
(Ret.)  
Samantha McDonald  
Catherine McGearry  
Kevin McGee  
McGuire & McGuire, PC  
Jodi-Ann McLane  
Bruce Melikian  
James Methe  
James Midgette  
Robert Monteleone Jr.  
Howard Moore  
Susan Moran  
Meredith Morrison  
Demitrios Moschos  
Edward Moynihan  
Matthew Mozian  
Timothy Murphy  
Caroline Murray  
Patricia Newcombe  
Linda Newell  
Yesenia Neyman  
AiVi Nguyen  
Merle Norman  
Kerry Northridge  
Daniel Notaro  
Paul Novak  
Colin O'Brien  
John Odierna  
Myra Orlen  
David Ostrander  
Kathleen O'Sullivan  
John Otoo

Lynette Paczkowski  
Dorothy Palmer  
Edward Paquette  
Richard Paris  
John Pepek  
Joseph Pieropan  
David Pixley  
Cheryl Pope  
Victoria Pulos  
Janet Hetherwick  
Pumphrey  
Debora Queeney  
Al and Debbie Randzio  
Frederick Read, III  
Michael Refolo  
Donna Riani  
Glen Ringbloom  
Margaret Robertson  
Susan Roche  
Michele Rooke  
Thomas Rooke  
Ross & Ross, PC  
Catherine Rossi  
Rachel Rothman  
David Roulston  
Kimberly Rozak  
W. Michael Ryan  
Edward Sabella  
Susan Sachs  
Laurie Salame  
Syreeta Samuels  
Daniel Sandell  
W. Merrill Sanderson  
Trevor Sanford  
Judith Savageau  
Erik Scheinfeldt  
Diandra Schloss  
Carl Schmittlein  
Teresa Scibelli  
Cynthia Scully  
J. Michael Scully  
Ernest Senecal  
Jiye Shi  
Robert Shute  
Richard Silver  
Ronald Silver  
Stephen Silverman  
Edward Simsarian  
James Sisto  
Sarah Smith  
Susan Smith  
Robert Sosvielle  
Michael Sowyrda  
Marilyn Sperling  
Beverly Spring  
Elizabeth Steel  
John Stewart  
Philip Stone  
Sally Stone

Spencer Stone  
Richard Stratford  
Seth Stratton  
Thomas Sullivan Jr.  
Sarah Szczebak  
  
Thomas and Marilyn  
Szumowski  
John Tarrone, III  
Marc Terry  
Carline Thibault  
Fred Thompson  
Erin Thron  
Natasha Torres  
Diane Tsoulas  
Ronald Turbin  
Peter Vaskas  
Ann Vaughn  
Peter Vickery  
Jeffrey Vigliotti  
Marc Vincelette  
Thomas Vincent  
Christopher Visser  
Tom Vukmirovits  
Robert Wainstein  
Ware & Goodman LLP  
Kenneth Warren, Jr.  
Ronald Weiss  
Marianne Winters  
Gregory Wolf  
David Wylie  
Natasha Yakovlev  
Zoe Zeichner  
Paula Zimmer  
Ziomek & Ziomek

If we have made a mistake in spelling your name, or have omitted to mention your gift, please accept our sincere apologies. Please contact the Development Office at 508.425.2805 with any corrections or queries.

\*Indicates a sustaining (monthly) donor



Community  
Legal Aid

Fairness and justice... for all



# Funders

Avidia Charitable Foundation  
Babson Capital LLC  
Berkshire Bank Foundation  
Berkshire Life Charitable Foundation  
Berkshire Taconic Community Foundation  
Central Massachusetts Agency on Aging  
City of Northampton  
City of Pittsfield  
Columbia Gas of Massachusetts  
Community Foundation of North Central  
Massachusetts  
Community Foundation of Western  
Massachusetts  
Elder Services of Berkshire County  
Ruth H. and Warren A. Ellsworth  
Foundation  
Equal Justice America  
Charles H. Farnsworth Trust  
Franklin County Home Care Corporation  
The George F. & Sybil H. Fuller Foundation  
Greater Springfield Senior Services, Inc.  
Greater Worcester Community  
Foundation  
Health Foundation of Central  
Massachusetts  
Highland Valley Elder Services  
Legal Advocacy and Resource Center

Legal Services Corporation  
Massachusetts Attorney General's Office  
Massachusetts Bar Foundation  
Massachusetts Department of Public  
Health  
Massachusetts Legal Assistance  
Corporation  
Mildred H. McEvoy Foundation  
MetroWest Health Foundation  
Nashoba Valley Community Healthcare  
Fund  
New Hope United Methodist Regional  
Ministry  
Pine Tree Legal Assistance  
Albert W. Rice Charitable Foundation  
U.S. Department of Housing and Urban  
Development  
United Way of Central Massachusetts  
United Way of Franklin County  
United Way of Hampshire County  
United Way of Northern Berkshire County  
United Way of Southbridge, Sturbridge &  
Charlton  
United Way of Webster & Dudley  
University of Massachusetts Medical  
School  
Veterans Inc.  
Webster Five Foundation  
WestMass Elder Care





# Financials

## Revenue

Massachusetts Legal Assistance Corp.	3,525,903
Legal Services Corporation	1,041,382
Government Grants	1,645,851
Foundation Grants	394,897
Private Fundraising	170,270
United Way Grants	120,547
Attorneys Fees	135,818
Donated Pro Bono Services	489,214
Other Income	121,867
	<hr/>
	7,645,749

## Expenses

Personnel	5,560,822
Occupancy	483,707
Operations	560,935
Library & Litigation	44,877
Sub-grants	29,560
Contract Services	170,811
	<hr/>
Total Expenses Before Donated Services	6,850,712
Donated Pro Bono Services	489,214
	<hr/>
<b>Total Expenses</b>	<b>7,339,926</b>
	<hr/>
<b>Change In Net Assets</b>	<b>305,823</b>
	<hr/> <hr/>

# Community Legal Aid

## Board Members

Donna Agure  
Michael P. Angelini, Esq.  
Charles R. Casartello, Jr., Esq., President  
Karla J. Clarke  
Brenda S. Doherty, Esq.  
Francis A. Ford, Esq.  
Justin P. Gelinaz, Esq.  
Livia Gonzalez  
Eric J. Gouvin, Esq.  
Hon. John M. Greaney (Ret.)  
Felicity Hardee Barry, Esq., Treasurer  
Hon. Herbert H. Hodos (Ret.)  
Susan M. Mailman  
Hon. James B. McElroy (Ret.)  
John T. McInnes, Esq.  
Debra Moncrieffe  
Judith A. Obiero  
Eugene P. O'Donnell, Jr., Esq.  
Deborah Orzack  
Sally Osei Tutu  
Aurelina Peguero  
Hon. Gail L. Perlman (Ret.)  
Maria M. Rivera-Ortiz, Esq.  
Todd Rodman, Esq.  
Marline Ruiz  
Dr. Linda D. Sagor  
John A. Shea, Esq., Vice-President

Jonathan R. Sigel, Esq.  
Beverly Spring  
Natasha Torres, Secretary/Clerk  
Gayle Flanders Weiss, Esq.

## Staff

Hisham Abouelleil  
Allen Acosta  
Norma Adler  
Daniel Bahls  
Shelley Barron  
Peter Benjamin  
Wendy Berg  
Alexandra Bonazoli  
Linda Boss  
Denise Brewer  
Rachel Brown  
Jon Burke  
John Busbin  
Kitty Callaghan  
Liz Campanale  
Olga Candelario  
Andrea Carillo  
Courtney Clemente  
Anita Conte  
Ines Diaz-Rodriguez  
Jen Dieringer  
Jane Edmonstone  
Devlin Farmer  
Chester Fernandez  
Laura Gal  
Edward Ginsberg  
Carmen Gonzalez



Community Legal Aid

Ron Gonzalez  
Joshua Gutierrez  
Maureen Harrington  
Liza Harris  
Judith Herberg  
Paula Hind  
Marion Hohn  
Candace Jaegle  
Lyonel Jean-Pierre  
Emily Jones  
Lydia Jusino  
Wendy Kane  
Sameea Kazmi  
Margery Kennard  
Sora Kim  
Teresa Lacava  
Kebby Lee  
Carrie Love  
Sarah Loy  
Jonathan Mannina  
Judith McLellan  
Ray Mestre  
Milagros Miranda  
Donna Morelli  
Michael Morelli  
Susan O'Connor  
Jannette Ortega  
Mildred Otero  
Patricia Owen  
Tina Paradiso  
Rebekah Provost  
Faye Rachlin  
Francisca Reyes

Amy Romero  
Corrine Ryan  
Jeffrey Sakol  
Dianne Sandman  
Blanca Santiago  
Paul Schack  
Gordon Shaw  
Michelle Smith  
Priscilla Sotak  
Maureen St. Cyr  
Chantal St. Fleur  
Jan Stiefel  
Uri Strauss  
Steve Taviner  
Chelsea Taylor  
Miriam Vasquez  
Evelyn Velasquez  
Pat Walsh-Ollari  
Amanda Winalski  
Jessica Woodman-Hardy  
Valerie Zolezzi-Wyndham

## Staff

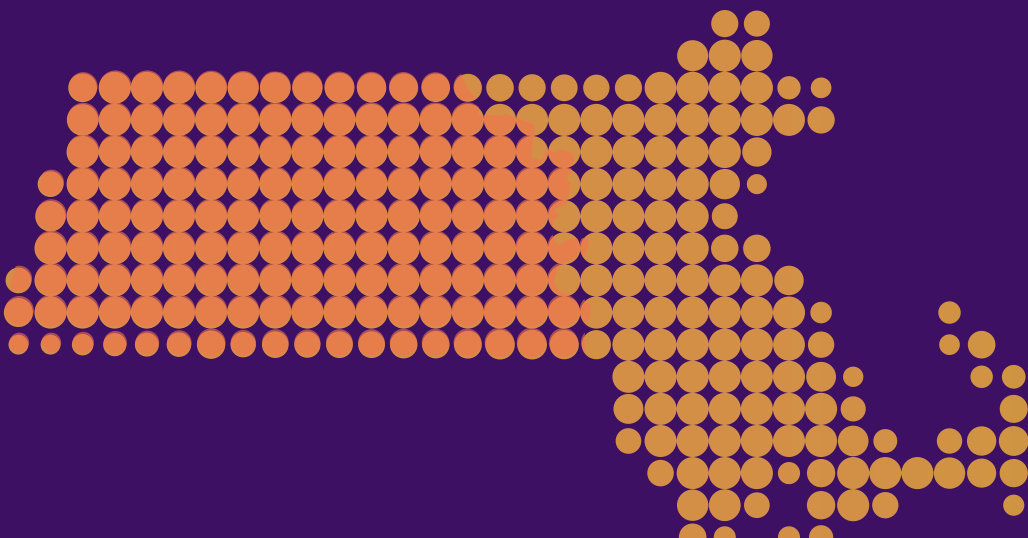
Oonagh Doherty  
Talia Gee  
Medha Makhoulouf  
Leticia Medina-Richman  
Janet Merrill  
Weayonnoh Nelson-Davies  
Jose Otero  
Billy Peard  
Melissa Pomfred  
Mercedes Rodriguez  
Ellen VanScoyoc

*The Central West Justice Center is a wholly-owned subsidiary of Community Legal Aid. The Justice Center does not receive any funding from the Legal Services Corporation.*

# Central West Justice Center

## Board of Managers

Charles R. Casartello, Jr., Esq.  
Charles Vander Linden, Esq.



**Community Legal Aid**

405 Main Street  
Worcester, MA 01608

Non profit Org.  
U.S. Postage  
**PAID**  
Worcester, MA  
Permit no.2

**COMMUNITY  
LEGAL AID**

(855) CLA-LEGAL  
(855)-252-5342

**MAIN OFFICE LOCATIONS**

**Northampton**

20 Hampton Avenue  
Northampton, MA 01060

**Pittsfield**

152 North Street  
Pittsfield, MA 01201

**Springfield**

One Monarch Place  
Springfield, MA 01144

**Worcester**

405 Main Street  
Worcester, MA 01608

**SATELLITE OFFICE  
LOCATIONS**

**Fitchburg**

76 Summer Street  
Fitchburg, MA 01420

**Greenfield**

55 Federal Street  
Greenfield, MA 01301

**Holyoke**

Holyoke Health Center  
230 Maple Street  
Holyoke, MA 01040

**Milford**

60 North Bow Street  
Milford, MA 01757

**North Adams**

61 Main Street  
North Adams, MA 01247

**Southbridge**

79 Elm Street  
Southbridge, MA 01550

[www.communitylegal.org](http://www.communitylegal.org)

